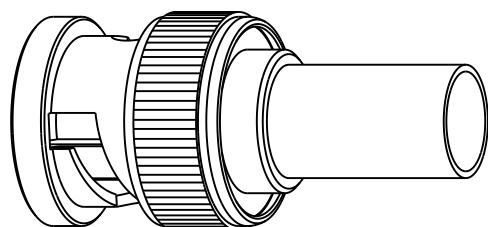


NOTES:

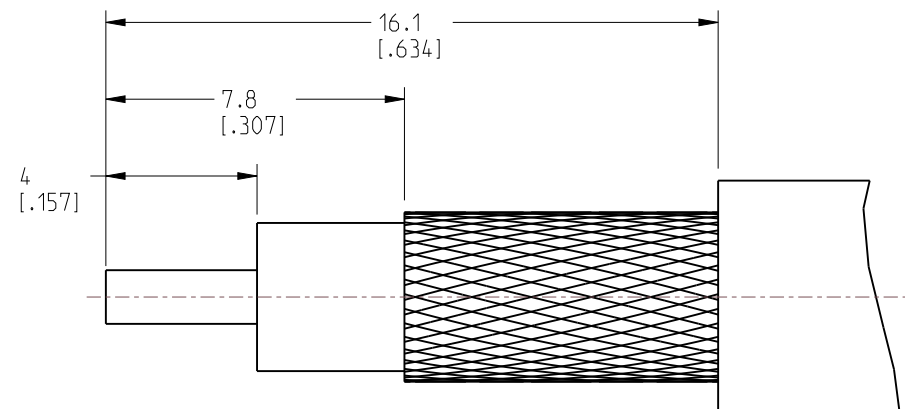
- MATERIALS AND FINISHES:
 - FERRULE - BRASS, NICKEL PLATING
 - RETAINER RING - BRASS, NICKEL PLATING
 - SPRING - BeCu, NICKEL PLATING
 - CONTACT PIN - BRASS, GOLD PLATING
 - BODY - BRASS, NICKEL PLATING
 - INSULATOR - DELRIN, NATURAL
 - GASKET - RUBBER, RED
 - SHELL - BRASS, NICKEL PLATING
- ELECTRICAL:
 - A. IMPEDANCE: 50 OHM, NOMINAL
 - B. FREQUENCY RANGE: DC TO 4 GHz
 - C. DIELECTRIC WITHSTANDING VOLTAGE: 1500 VRMS, MIN.
- MECHANICAL:
 - A. DURABILITY: 500 CYCLES MIN.
 - B. TEMPERATURE RANGE: -40°C TO +85°C

- CRIMPED FERRULE HEX. CRIMP SIZE .255"
- CRIMPED CONTACT PIN HEX. CRIMP SIZE .068" OR SOLDER
- PACKAGING:
 - A. QUANTITY: 1 CONNECTOR, 1 CONTACT & 1 FERRULE PER BAG, 25 BAGS PER BOX.
 - B. MARKING: "AMPHENOL.112116-WP, AND DATE CODE"
 - C. ADDITIONAL LABEL ON BOTH THE BOX & CARTON "CN-BM53-8X-25-RG8X BNC 50 Ohm 3pc 25pk"

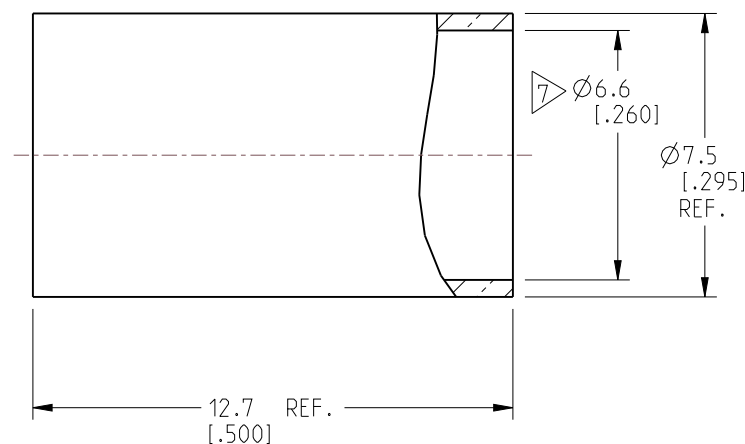
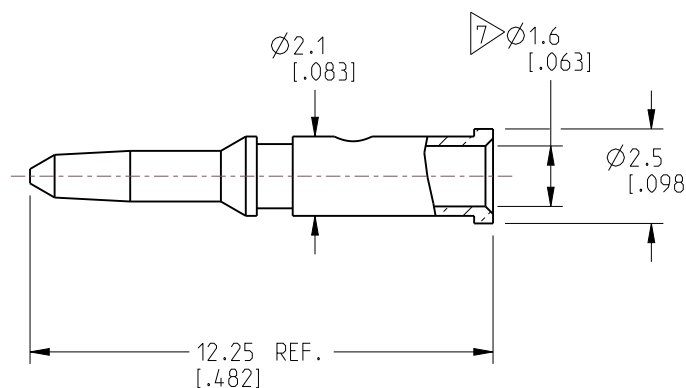
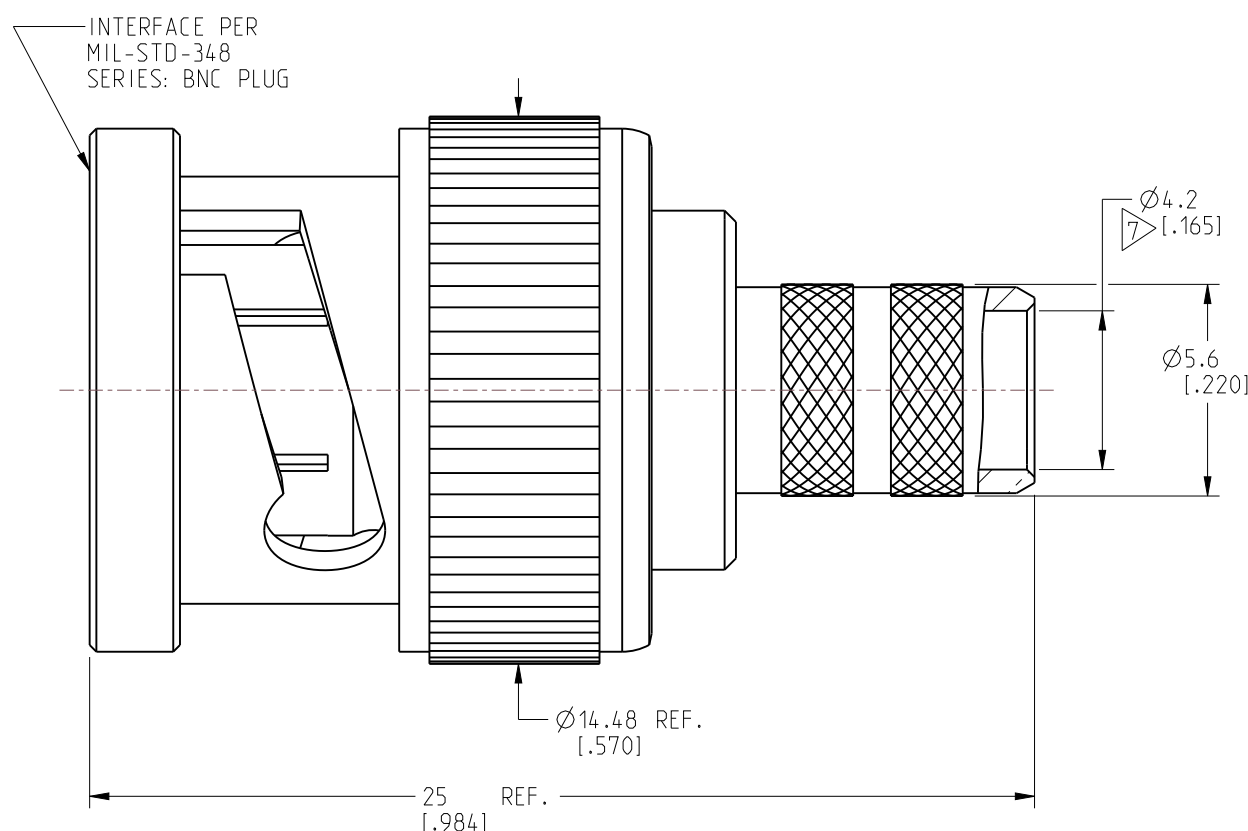
7 SHOWS CABLE ENTRY DIMENSIONS.



REVISIONS				
REV	DESCRIPTION	DATE	ECN	BY
A	RELEASE TO MFG.	12-AUG-21	15864	AS
B	THE PACKAGING WAS CHANGED		16034	



RECOMMENDED CABLE STRIPPING DIMENSIONS



CUSTOMER OUTLINE DRAWING

ALL OTHER SHEETS ARE FOR INTERNAL USE ONLY

NOTICE: These drawings, specifications, or other data (1) are, and remain the property of Amphenol corp. (2) must be returned upon request; and (3) are confidential and not to be disclosed to any person other than those to whom they are given by Amphenol Corp. The furnishing of these drawings, specifications, or other data by Amphenol Corp., or to any other person to anyone for any purpose is not to be regarded by implication or otherwise in any manner licensing, granting rights to permitting such holder or any other person to manufacture, use or sell any product, process or design, patented or otherwise, that may in any way be related to or disclosed by said drawings, specifications, or other data.

UNLESS OTHERWISE SPECIFIED DIMENSIONS ARE METRIC (INCHES) AND TOLERANCES ARE:
 <0.5mm = ±0.05mm [$<0.020 = \pm 0.002$]
 >0.5 - 6mm = ±0.1mm [$>0.020 - 0.236 = \pm 0.004$]
 >6.00 - 30mm = ±0.2mm [$>0.236 - 1.181 = \pm 0.008$]
 >30.00 - 120mm = ±0.3mm [$>1.181 - 4.725 = \pm 0.012$]

MATERIAL
SEE NOTES

TITLE
BNC CRIMP PLUG
FOR BELDEN RG-8/X

Amphenol RF

THIRD ANGLE PROJ. REFERENCE 112533 EAR# 10710

ANGLES = ±1°

ENGR.1 C.CROTTY ENGR.2 M.ZHANG DATE 02-Dec-21

SHEET NO. 2 OF 2 SCALE: 5.0:1.0

SIZE B	DRAWING NO. 112533-WP	REV B
	ITEM NO. 112533-WP	
	PART NO. 112533-WP	